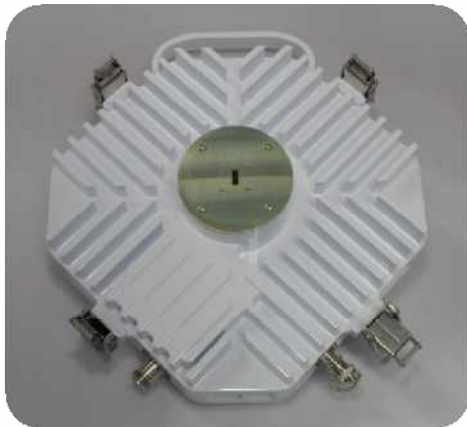


Out-Door-Units for SDH DMR



Applications

- Licensed Band Digital Microwave Radio Applications
- High Capacity Ethernet, PDH platform
- BTS Backhaul Applications
- Unlicensed Band Point-to-Point Applications

Features

- Available in the 7 / 8 / 13 / 15 / 18 / 23GHz
- (11 / 26 / 28 / 32 / 38GHz coming soon)
- ATPC (Automatic Transmit Power Control)
- Low Power Consumption
- High Reliability
- Customized Protocol for IDU

SDH Specification

Frequency Band	7GHz	8GHz	13GHz	15GHz	18GHz	23GHz
T/R Spacing (MHz)	ETSI (161)	ETSI (266)	ETSI (266)	ETSI (490)	ETSI (1008)	ETSI (1008)
RF Bandwidth (MHz)	7/14/28/56	7/14/28/56	7/14/28/56	7/14/28/56	7/14/28/56	7/14/28/56
Modulation	QPSK 16/32/64/128/256 QAM	QPSK 16/32/64/128/256 QAM	QPSK 16/32/64/128/256 QAM	QPSK 16/32/64/128/256 QAM	QPSK 16/32/64/128/256 QAM	QPSK 16/32/64/128/256 QAM
RF Interface	1.025"dia	1.025"dia	WR-75	WR-62	WR-42	WR-42
IF Interface	N-type 50Ω	N-type 50Ω	N-type 50Ω	N-type 50Ω	N-type 50Ω	N-type 50Ω
Telemetry	ASK (10/5.5MHz)	ASK (10/5.5MHz)	ASK (10/5.5MHz)	ASK (10/5.5MHz)	ASK (10/5.5MHz)	ASK (10/5.5MHz)
Power Supply(V)	-40 ~ -58 V DC,	-40 ~ -58 V DC,	-40 ~ -58 V DC,	-40 ~ -58 V DC,	-40 ~ -58 V DC,	-40 ~ -58 V DC,
Power Consumption(W)	35	35	35	35	35	35
Transmitter						
IF Frequency (MHz)	350	350	350	350	350	350
RF Output Power (dBm)	QPSK : 30 16/32QAM: 28 64/128QAM: 24 256QAM: 22	QPSK : 30 16/32QAM: 28 64/128QAM: 24 256QAM: 22	QPSK : 26 16/32QAM: 23 64/128QAM: 18 256QAM: 16	QPSK : 26 16/32QAM: 23 64/128QAM: 18 256QAM: 16	QPSK : 25 16/32QAM: 22 64/128QAM: 17 256QAM: 15	QPSK : 25 16/32QAM: 22 64/128QAM: 17 256QAM: 15
Power Accuracy	± 2	± 2	± 2	± 2	± 2	± 2
Output Power Muted (dBm)	< -50	< -50	< -50	< -50	< -50	< -50
ATPC Range (dB)	-4 ~ Max.	-4 ~ Max.	-4 ~ Max.	-4 ~ Max.	-4 ~ Max.	-4 ~ Max.
Tx Spectrum Mask	Comply with ETSI	Comply with ETSI	Comply with ETSI	Comply with ETSI	Comply with ETSI	Comply with ETSI
Receiver						
IF Frequency (MHz)	140	140	140	140	140	140
Typical High RSL (dBm)	-20	-20	-20	-20	-20	-20
Synthesizer						
Frequency Accuracy (ppm)	± 7	± 7	± 7	± 7	± 7	± 7
Synthesizer Step Size (KHz)	250	250	250	250	250	250
Phase Noise						
@10KHz Offset	-78dBc/Hz	-78dBc/Hz	-76dBc/Hz	-76dBc/Hz	-75dBc/Hz	-75dBc/Hz
@100KHz Offset	-104dBc/Hz	-100dBc/Hz	-100dBc/Hz	-100dBc/Hz	-100dBc/Hz	-100dBc/Hz
Mechanical						
Size	253.4 X 267.4 X 85.5mm					
Weight	3.5Kg					
Environmental						
Operating Temperature	-33°C ~ +55°C					
Storage / Transport	ETS 300-019-2-1					

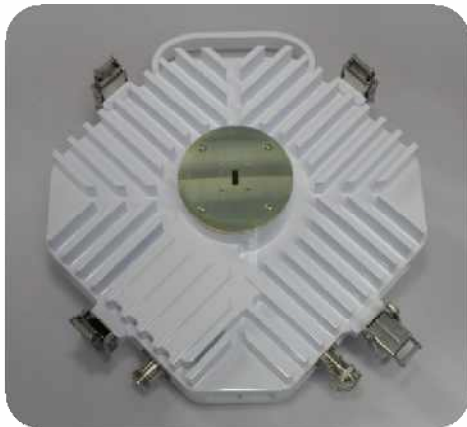
The specification subject to change without notice.

For the customized specification, price, and delivery ; Contact us



#1005, Woolim Lions Valley 3rd, 5445 Sangdaewon-dong, Jungwon-gu, Seoungnam-si, Gyeonggi-do 462-819, Korea
TEL : +82-31-713-6105 FAX : +82-31-720-5011 [Http://www.genmixtech.com](http://www.genmixtech.com)

Out-Door-Units for PDH DMR



Applications

- Licensed Band Digital Microwave Radio Applications
- High Capacity Ethernet, PDH platform
- BTS Backhaul Applications
- Unlicensed Band Point-to-Point Applications

Features

- Available in the 7 / 8 / 13 / 15 / 18 / 23GHz
- (11 / 26 / 28 / 32 / 38GHz coming soon)
- ATPC (Automatic Transmit Power Control)
- Low Power Consumption
- High Reliability
- Customized Protocol for IDU

PDH Specification

Frequency Band	7GHz	8GHz	13GHz	15GHz	18GHz	23GHz
T/R Spacing (MHz)	ETSI (161)	ETSI (119)	ETSI (266)	ETSI (420)	ETSI (1008)	ETSI (1008)
RF Bandwidth (MHz)	7/14/28	7/14/28	7/14/28	7/14/28	7/14/28	7/14/28
Modulation	QPSK/16QAM	QPSK/16QAM	QPSK/16QAM	QPSK/16QAM	QPSK/16QAM	QPSK/16QAM
RF Interface	1.025"dia	1.025"dia	WR-75	WR-62	WR-42	WR-42
IF Interface	N-type 50Ω	N-type 50Ω	N-type 50Ω	N-type 50Ω	N-type 50Ω	N-type 50Ω
Telemetry	ASK (10/5.5MHz)	ASK (10/5.5MHz)	ASK (10/5.5MHz)	ASK (10/5.5MHz)	ASK (10/5.5MHz)	ASK (10/5.5MHz)
Power Supply(V)	-40 ~ -58 V DC,	-40 ~ -58 V DC,	-40 ~ -58 V DC,	-40 ~ -58 V DC,	-40 ~ -58 V DC,	-40 ~ -58 V DC,
Power Consumption(W)	35	35	35	35	35	35
Transmitter						
IF Frequency (MHz)	350	350	350	350	350	350
RF Output Power (dBm)	QPSK : 27 16QAM : 22	QPSK : 27 16QAM : 22	QPSK : 25 16QAM : 21	QPSK : 23 16QAM : 20	QPSK : 23 16QAM : 20	QPSK : 23 16QAM : 20
Power Accuracy	± 2	± 2	± 2	± 2	± 2	± 2
Output Power Muted (dBm)	< -50	< -50	< -50	< -50	< -50	< -50
ATPC Range (dB)	-4 ~ Max.	-4 ~ Max.	-4 ~ Max.	-4 ~ Max.	-4 ~ Max.	-4 ~ Max.
Tx Spectrum Mask	Comply with ETSI	Comply with ETSI	Comply with ETSI	Comply with ETSI	Comply with ETSI	Comply with ETSI
Receiver						
IF Frequency (MHz)	140	140	140	140	140	140
Typical High RSL (dBm)	-20	-20	-20	-20	-20	-20
Synthesizer						
Frequency Accuracy (ppm)	± 7	± 7	± 7	± 7	± 7	± 7
Synthesizer Step Size (KHz)	250	250	250	250	250	250
Phase Noise						
@10KHz Offset	-78dBc/Hz	-78dBc/Hz	-76dBc/Hz	-76dBc/Hz	-75dBc/Hz	-75dBc/Hz
@100KHz Offset	-104dBc/Hz	-100dBc/Hz	-100dBc/Hz	-100dBc/Hz	-100dBc/Hz	-100dBc/Hz
Mechanical						
Size	253.4 X 267.4 X 85.5mm					
Weight	3.5Kg					
Environmental						
Operating Temperature	-33°C ~ +55°C					
Storage / Transport	ETS 300-019-2-1					

The specification subject to change without notice.

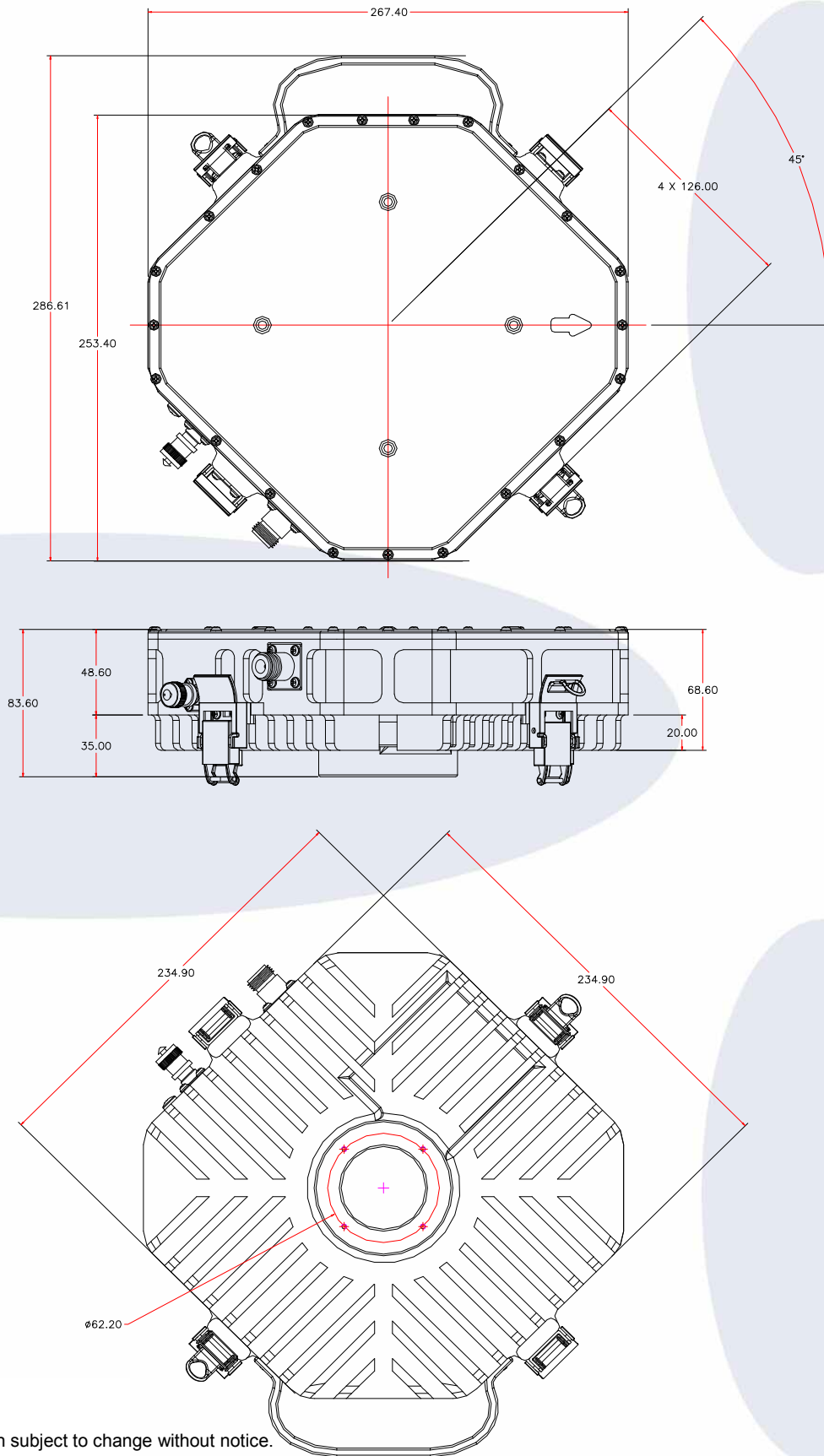


For the customized specification, price, and delivery ; Contact us

#1005, Woolim Lions Valley 3rd, 5445 Sangdaewon-dong, Jungwon-gu, Seoungnam-si, Gyeonggi-do 462-819, Korea
TEL : +82-31-713-6105 FAX : +82-31-720-5011 [Http://www.genmixtech.com](http://www.genmixtech.com)

Out-Door-Units for PDH/SDH DMR

Out Line



The specification subject to change without notice.

For the customized specification, price, and delivery ; Contact us



#1005, Woolim Lions Valley 3rd, 5445 Sangdaewon-dong, Jungwon-gu, Seoungnam-si, Gyeonggi-do 462-819, Korea
TEL : +82-31-713-6105 FAX : +82-31-720-5011 [Http://www.genmixtech.com](http://www.genmixtech.com)

Rev 1.0 on Aug. 28, 2013